



25 to 150 mm 2-Way Balance Globe Valve Bodies: Cast Iron Flanged, PN16, PN25 Body Rating

General

The VSB and VBG Series 2-way balance globe valves are engineered specifically for temperature control applications requiring an equal percentage flow characteristic and a high degree of control precision. Common applications include hot water, chilled water and low pressure steam coils and heat exchangers in air handling units, chillers, boilers and cooling towers.

All VSB and VBG Series valves are operated by SH Series (general purpose) or MVL Series (heavy duty) electric actuators which are ordered separately. The actuators are designed specially for mounting directly to VSB and VBG Series valves without the need of time-consuming field calibration. However, when a SH actuator is used, its stroke setting must be set to correspond with the specified valve stroke.

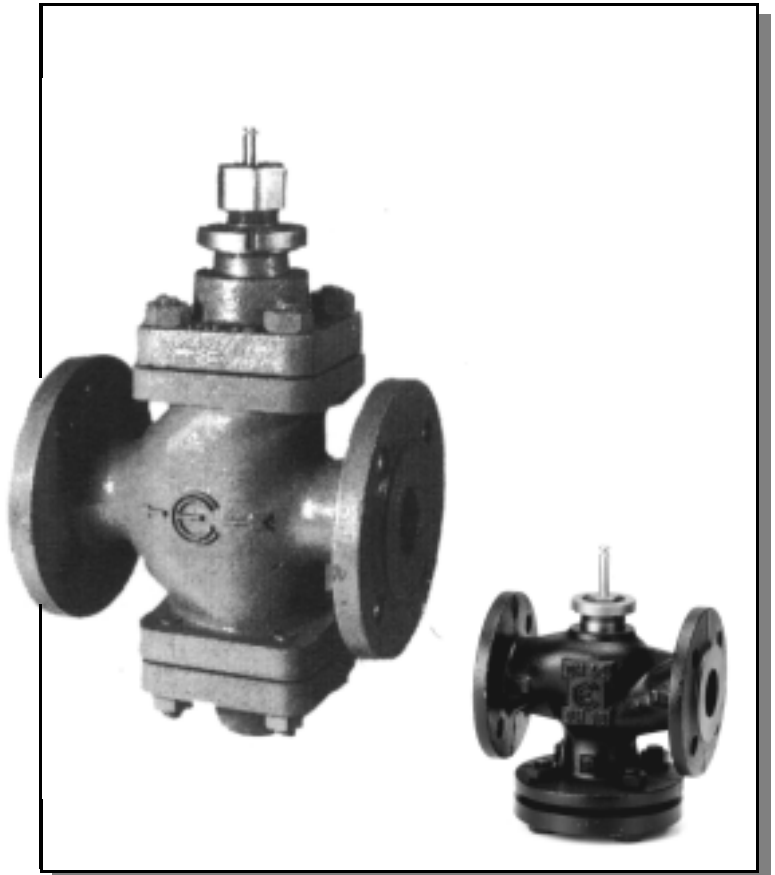
Material

VBG

Body and Seat: Cast Iron
Stem: Stainless Steel
Plug: Forged brass
Packing: FPM
Balance Chamber: Teflon + FPM

VBS

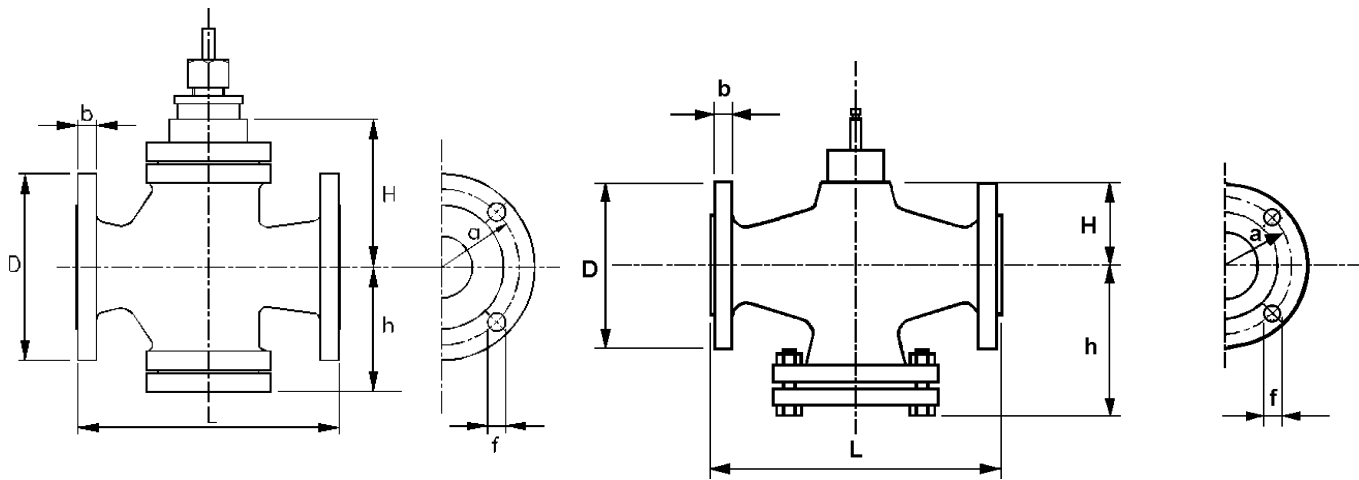
Body: Spheroid Iron
Stem, Seat and Plug: Stainless Steel
Packing: Teflon
Balance Chamber: Teflon ring+ Stainless Steel Spring



Specification

Working Pressure:	VBG 16 bar VBS 25 bar
Pipe Connection:	Flange PN16 (VBG), PN25 (VBS)
Flow Characteristics:	"A" equal percentage
Leakage:	0.03% VBG 0.02% VBS
Fluid Limitations :	Water (max. 50% Glycol) VBG (-10...150 °C) VBS (-10...230 °C)

The specification above are normal and conform to generally acceptable industry standard. Cyrus is not responsible for damages resulting from misapplication or misuse of its products.



Dimensions in mm											Differential Pressure in bar				
Model	Dn	Kv	L	H	h	D	b	a	f	holes	kg	Stroke	SH	MVL	MVLA/C
VBS25	25	10	160	83	83	115	18	85	14	4	6	16.5	25	25	25
VBS32	32	16	180	123	102	140	18	100	18	4	10	25	25	25	25
VBS40	40	25	200	123	104	150	18	110	18	4	11	25	25	25	23.5
VBS50	50	40	230	123	110	165	20	125	18	4	16	25	25	25	16.5
VBS65	65	63	270	147	124	185	22	145	18	8	20	25	25	25	10
VBG80	80	100	310	81	158	200	22	160	18	8	28	45	16	16	10
VBG100	100	130	350	93	178	220	22	180	18	8	32	45	16	16	8
VBG125	125	200	400	115	203	250	24	210	18	8	45	45	13.5	16	5.5
VBG150	150	300	480	133	243	285	24	240	22	8	60	45	10.5	14.5	4.5

Installation

PIPE CONNECTIONS

The valve must be piped according to flow directions as indicated on valve body.

VALVE MOUNTING

Before mounting valve, be sure that pipes are clean and free from scores. It is essential that pipes be lined up squarely with the valve at each connection, free from vibrations. For installations on plants with high temperature fluid (steam, superheated steam, water, or diathermy fluid) use expansion joints to avoid pipe buckling against valve body.

Valves may be mounted in any position provided that main shaft of actuator is always horizontal. Leave sufficient clearance around the valve for incidental maintenance.

Valve must not be installed in explosive atmosphere nor at ambient temperature higher than 50 °C and lower than -5 °C; must not be subject to steam jets, water jets or dripping.